

# Emily Johnson

Apartment 202, London Fields, Hackney



1. Site and Property Analysis
2. Research Summary
3. Concept Development
4. Project Summary
5. Technical Drawings
6. Sketches & Illustrations
7. Key Hard Finishes and Furniture



# Site and Property Analysis including Light Studies

## SITE-

- Green parks, cycling and running trails, fresh markets cafes, restaurants, pubs and clubs with international DJs is making London Fields, Hackney one of the capital's most fashionable and desirable areas. It's townhouse vibes and arty atmosphere attracts young vibrant crowd. This has resulted in a lot of new builds around the area. These builds are strikingly modern with high specs and very well finished.
- Emily grew up in East London and has always lived in this area. She has family and friends around the area and feels very comfortable here. She loves the arty young buzz that the area offers.

## PROPERTY -

- The property is a comfortable 100sq metres with a south facing terrace that can be accessed through a wall of fine framed, sliding doors. This wall also boasts of a tall window on the opposite end. There are further two large and one small window on the west wall. These provide ample light to most of the apartment. However the north-eastern side is bereft of any natural light.
- The finished floor level includes a raised subfloor that will enable comfortable routing of the services and hence not hinder with the spatial planning.
- The apartment boasts of a high ceiling of 3500meters. This is a luxury in London but can also be a hindrance to some design schemes.



“Every cubic inch of space is a miracle”

-Walt Whitman(American poet)





# Research Summary

- Research was based on the client's brief and the Q&A session. The picture collage is a representation of things that are important to Emily and her many different hobbies and interests.
- Along with site, space and light analysis, precedent study of 100sqm apartment in different parts of the world was done to understand how to optimise the space to provide a layout that's functional and aesthetical.
- Extensive research was done to understand the space requirements for yoga, best way to display or store DJ equipment and the music instruments. Ergonomic and Anthropometric study helped to design the areas required for this.
- E-visits or online visits to South African Safari lodges helped to understand the design elements and aesthetics that attract Emily to them and helped to understand how to incorporate some features into the design.
- Research was also done to source materials and FFE that will fit with the scheme and with Emily's wish list and tastes.



# Concept Development

Concept: SYNERGY

Idea : RHYTHM & PATTERN

The concept is inspired by three aspects that portray Emily- importance of yoga, enjoyment of music and love for nature. And when they come together, they create Synergy.

Synergy comes from the Greek word 'sunergon' which translates to 'working together'. This is seen in yoga with its many rhythmic postures that work together to make asanas, music with its various rhythmic patterns that make a tune or song and safari with its various elements working together to create an atmosphere of excitement and fun. The commonality here is rhythm which is one of the key elements of interior design.

The image of a colourful zebra represents the concept as it symbolizes individualism and community. The animal is a symbol of strength, lives in a herd but has its own uniqueness. Emily, like this image, has her individual self-meditation, spirituality, yoga and has a social, colourful and fun side to her with her many friends, music and DJing. And all this work together to create Synergy- a colourful Zebra.

The design strives to bring Yoga, Music and Nature together in the apartment through the layout, some features and the use of certain materials in the main social areas.

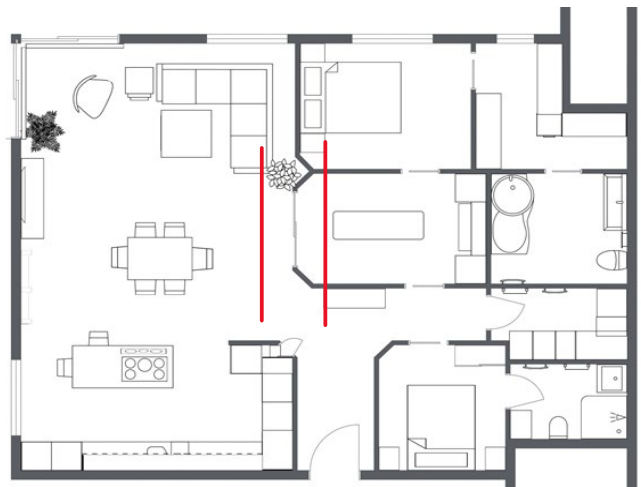
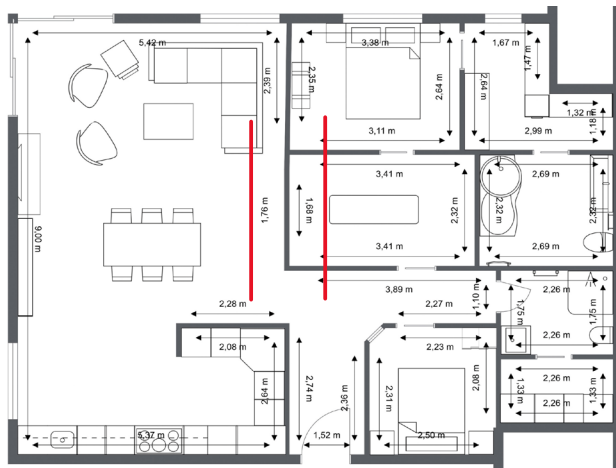
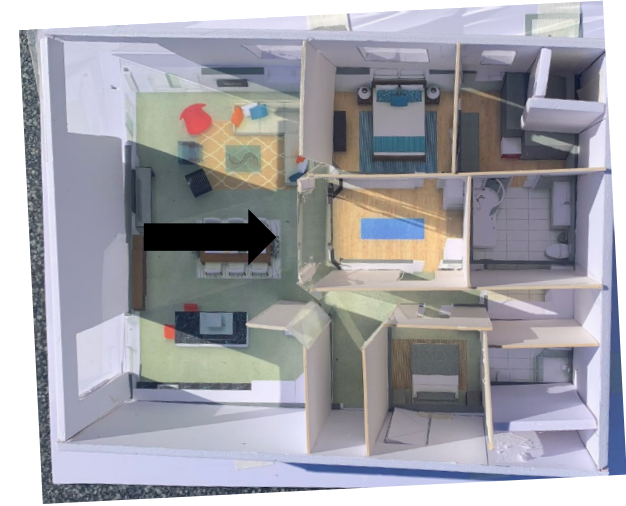






# Key Design Challenges and Solutions

- The other challenge that this layout presented is the lack of natural light coming into the yoga room. This was an important consideration for a yoga space.
- The solution to this was making the south facing chamfered wall of the yoga room a glass wall. With this the room will benefit from natural light almost through out the day.
- However this presented another challenge of the room feeling like a glass box.
- To overcome this, slim frame folding doors were introduced. This solution had dual benefit as it opened up the space and can become a part of the social areas when some extra space was needed.
- Another challenge that was encountered was that the combination of glass wall, high ceiling, use of greys in wall colour and concrete effect floor tiles made the area quite cold and uninviting.
- Wood panelling inspired by the South African lodges was added to the adjacent wall. This compliments the glass and brings warmth to the area. Similar panels are also used on the opposite wall to keep the rhythm in the design and functionally aid in concealing the TV mount mechanism and wires of the DJ station.



# Project Summary

Study of the brief, client Q&A and research helped to zone into two aspects that the design would give importance to- a dedicated yoga space and sufficient storage for a clutter free apartment.

1. The final layout provides Emily with a space that would be her personal zone to help her inner self grow. This can open out into the outer social zones to reveal her social and fun side.
2. The yoga room has a storage cupboard with a golf rack for Hugh's golf bag and another one for Emily's yoga equipment. This wall also has a custom made floating book shelf.
3. A DJ station stands below the wall mounted TV and a bespoke music display unit to house Emily and Hugh's instruments.
4. The master bedroom is comfortable. The ceiling has been lowered to make it cozy. The wardrobes are all hidden behind a wall to create a walk-in closet. The closet has a few open units to hang clothes and a low level shoe storage to house Emily and Hugh's large collection of trainers and shoes.
5. Storage is provided in the yoga room, walk-in closet and utility taking advantage of the high ceiling with provision of attic storage for things like suitcases, Christmas decorations etc that are not used frequently.

The finishes are influenced by Emily's preference of simple Scandi interiors with a touch of industrial and South African safari vibe.

The design focuses on functionality and has strived to make a comfortable, inviting place that will become home to Emily and Hugh.

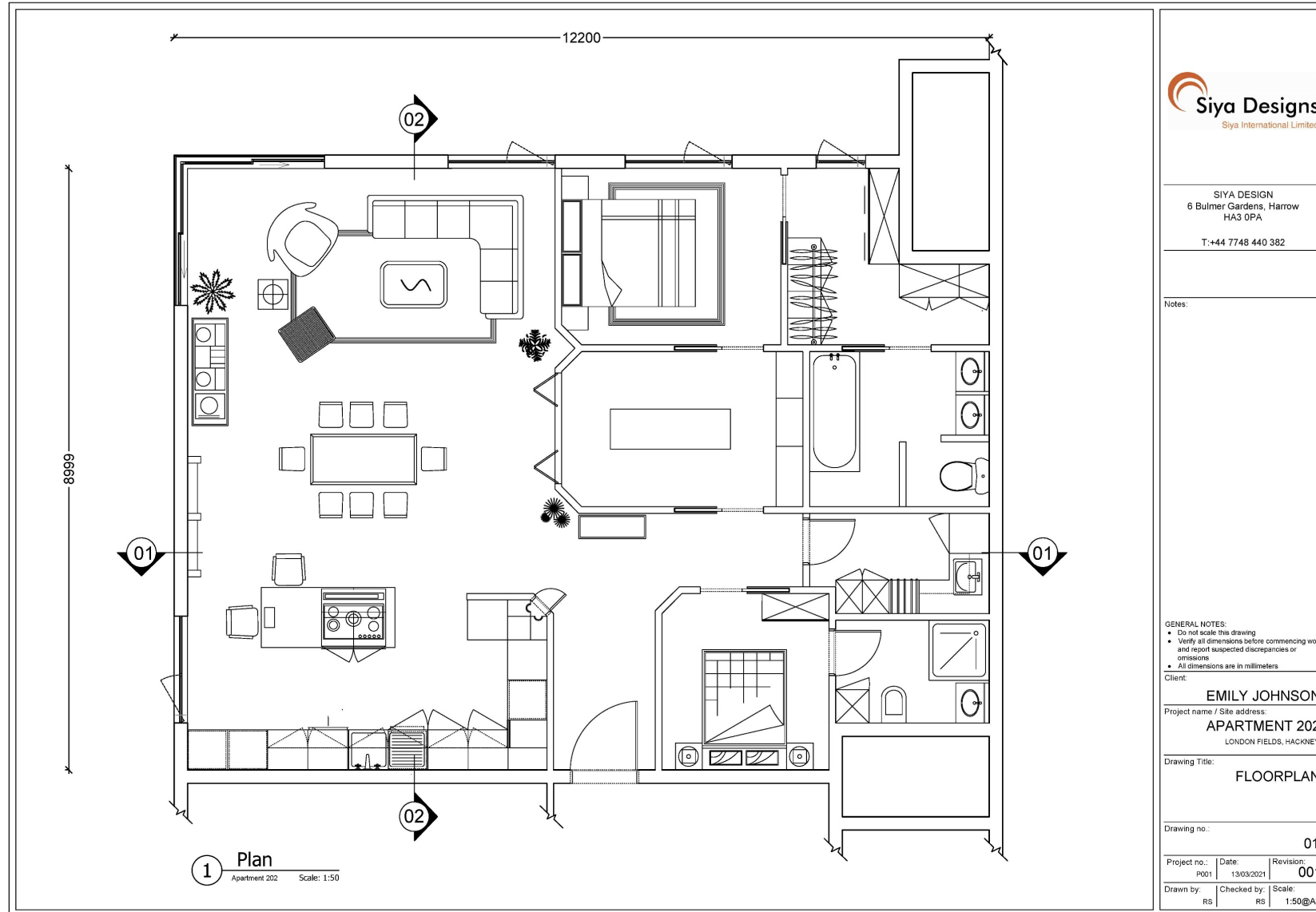


“Home isn't a place, it's a feeling!”

-Anonymous

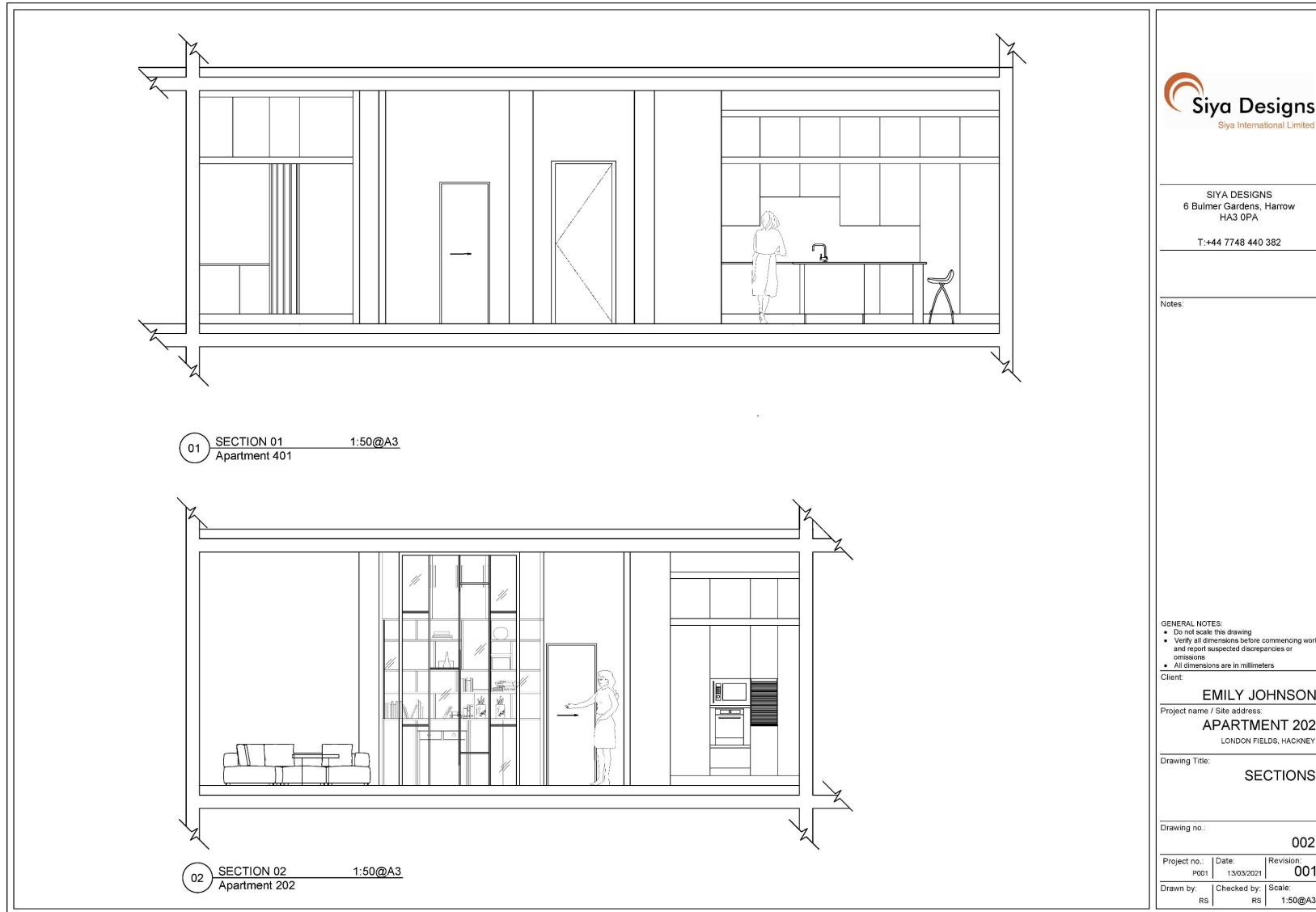


# Technical Drawings- Floorplan



The layout was planned with the yoga room in the centre of the apartment. The other rooms were placed around this room in a Piet Mondrian inspired grid. The social areas of kitchen, dining and living are open and spacious. The private and work areas of bedrooms, bathrooms and utility are comfortable and functional.

# Technical Drawings- Sections



→ The long section is a view of a part of the kitchen- a few tall units, floor & wall units, island, the entrance door, door to the guest room and utility storage and drying rack.

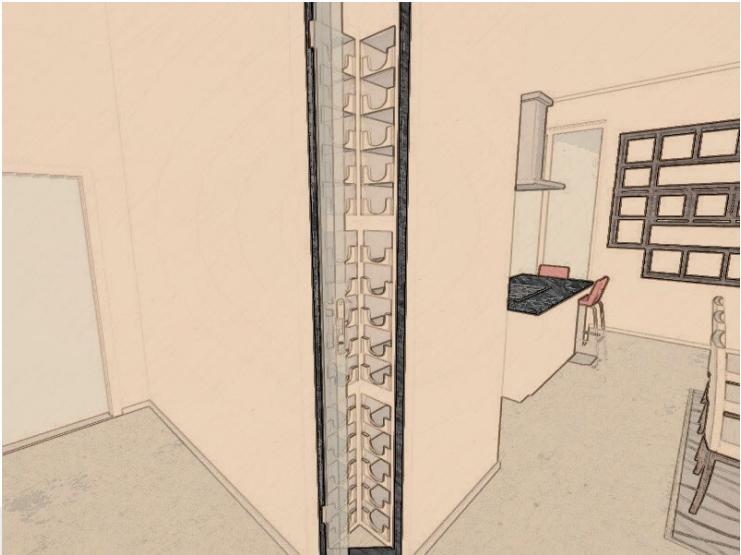
→ The short section is a view of the sofa in the living room, the yoga room glass door, the utility door and the tall units of the kitchen. Since the door to the yoga room is glass, the golf storage unit, bespoke bookcase and attic storage units are also visible.

# Illustrations

## Yoga Room with Glass Wall



## Wine Storage Feature



Furniture and fabrics are not the actual ones chosen for the project. These are for illustration/rendering purposes only.



# Illustrations

## Social Area-Living, Dining, Kitchen



Furniture and fabrics are not the actual ones chosen for the project. These are for illustration/rendering purposes only.



# Illustrations and Sketches

## Music Instrument Display Wall with scaled Elevation

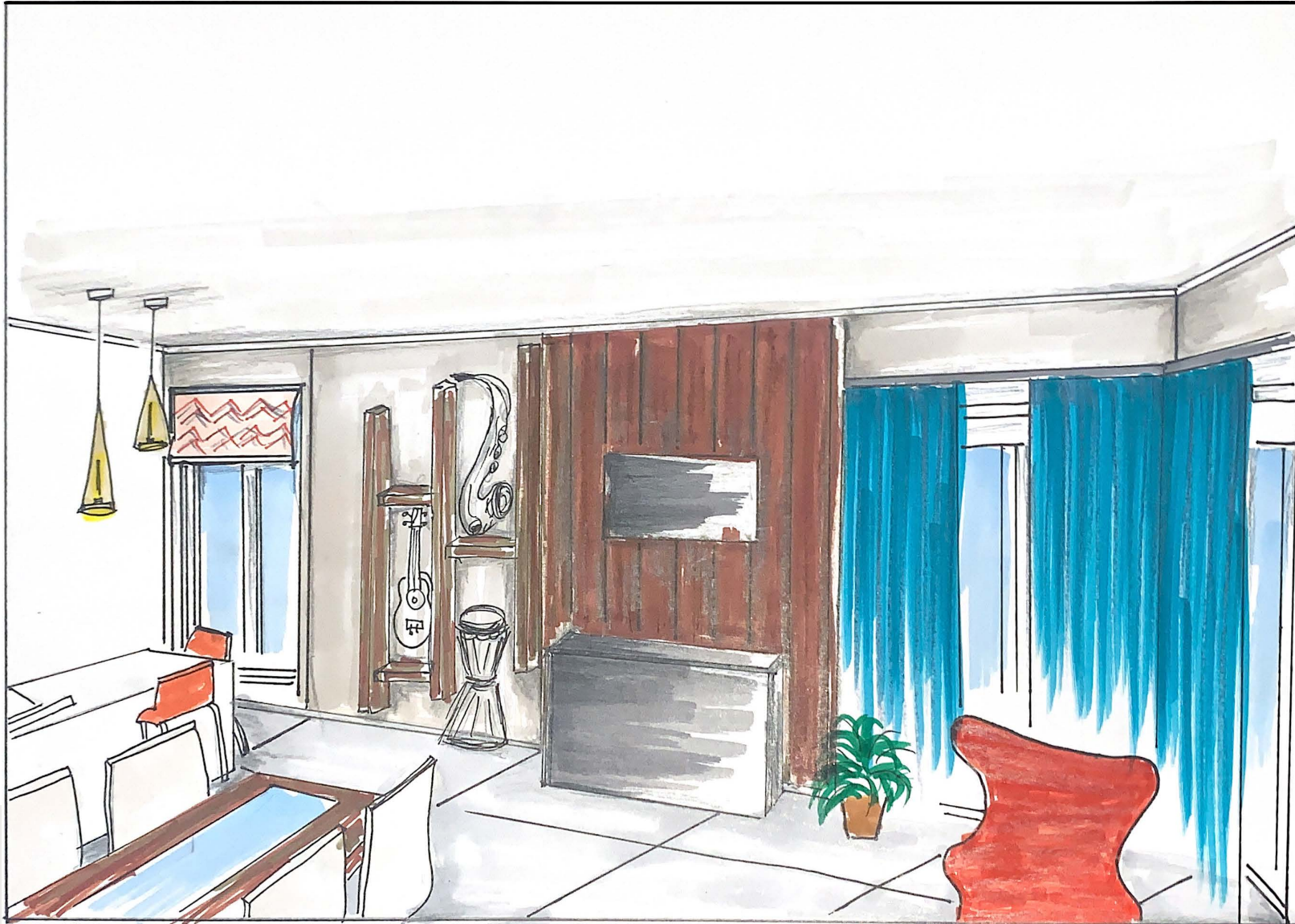


Furniture and fabrics are not the actual ones chosen for the project. These are for illustration/rendering purposes only.



# Illustrations and Sketches

Music Instrument Display Wall- Hand rendered

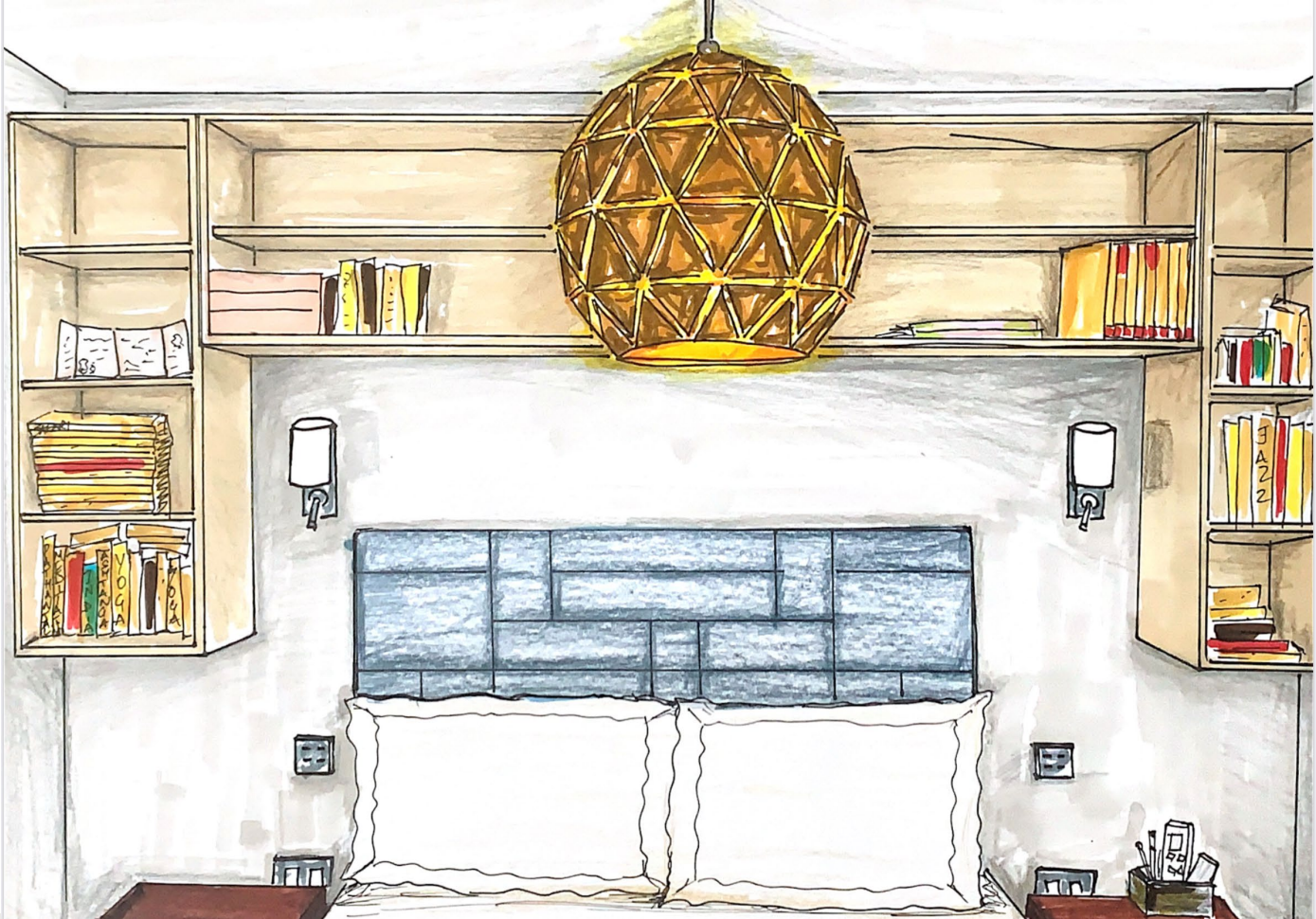


Furniture and fabrics are not the actual ones chosen for the project. These are for illustration/rendering purposes only.



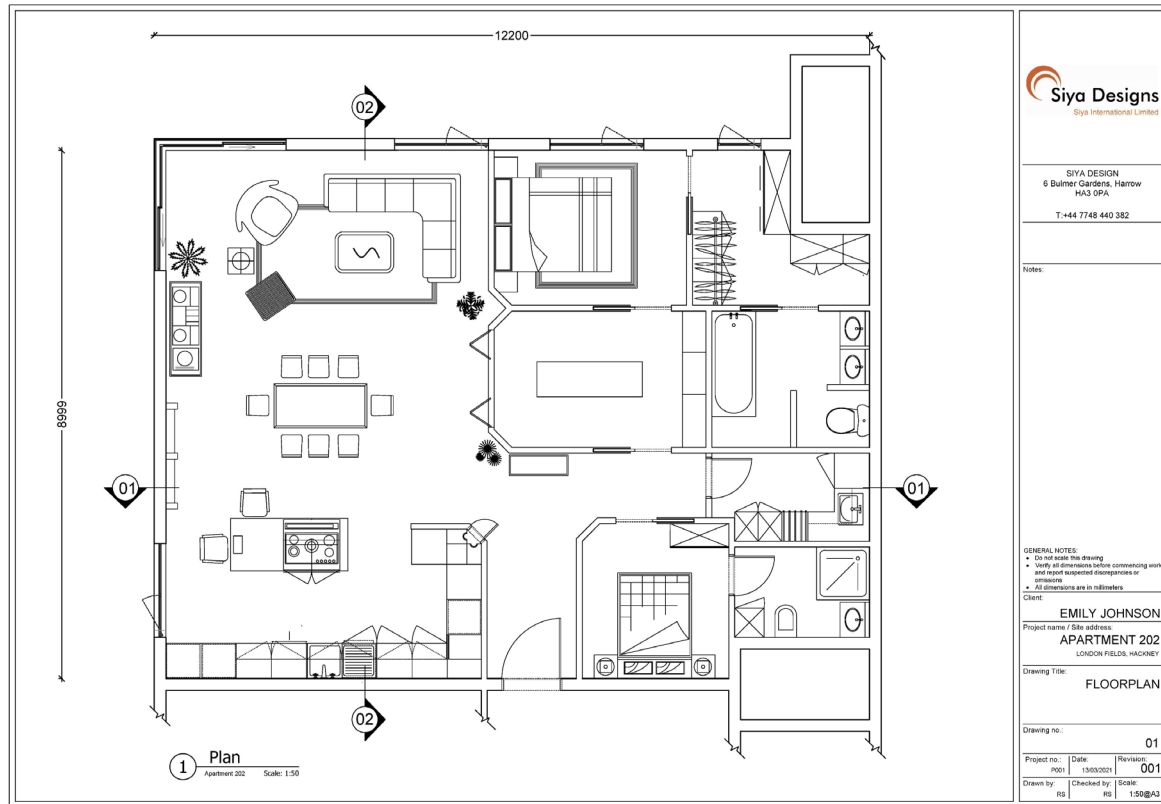
# Illustrations and Sketches

Master Bedroom- Hand rendered to show Headboard and built in bookshelves



Furniture and fabrics are not the actual ones chosen for the project. These are for illustration/rendering purposes only.

# The Layout- 2D & 3D Floorplan



Furniture and fabrics are not the actual ones chosen for the project. These are for illustration/rendering purposes only.



# Key Hard Finishes

1 Cornforth White Wall Colour

BRAND: Farrow & Ball

2 Portland Hood Concrete effect  
Porcelain Tile 1mx1m(Living, Dining,  
Kitchen)

BRAND: Fondovalle

3 Amazon Character 180mm

Venture Plank Engineered  
Wood(Bedrooms, Yoga room)

BRAND: Havwoods

4 Acupanel Contemporary  
Walnut Acoustic Wood Panels  
3000mm(H)x600(W)

BRAND: The Wood Veneer Hub

5 Kitchen Furniture- Ikono in  
Carboton Sirius in Platinum

BRAND: Leicht

6 Belgium Blue Quartz  
Composite Worktop and Splashback

BRAND: Diresco





# Key Furniture and Fittings



1



2

5



3



4



6



- 1 Alphabet Modular Sofa, Piero Lissoni, Fritz Hansen
- 3 Massa Dining Table with Bronze Ceramic & Walnut, Heal's
- 5 Nuvano Hanging Light(Living Room), Eglo

- 2 Channels Copper, Kelly Wearstler, The Rug Company
- 4 Anais Dining Chair, Heal's
- 6 Concessa Pendant Lamp, Cappuccino/gold(Kitchen Island), Eglo